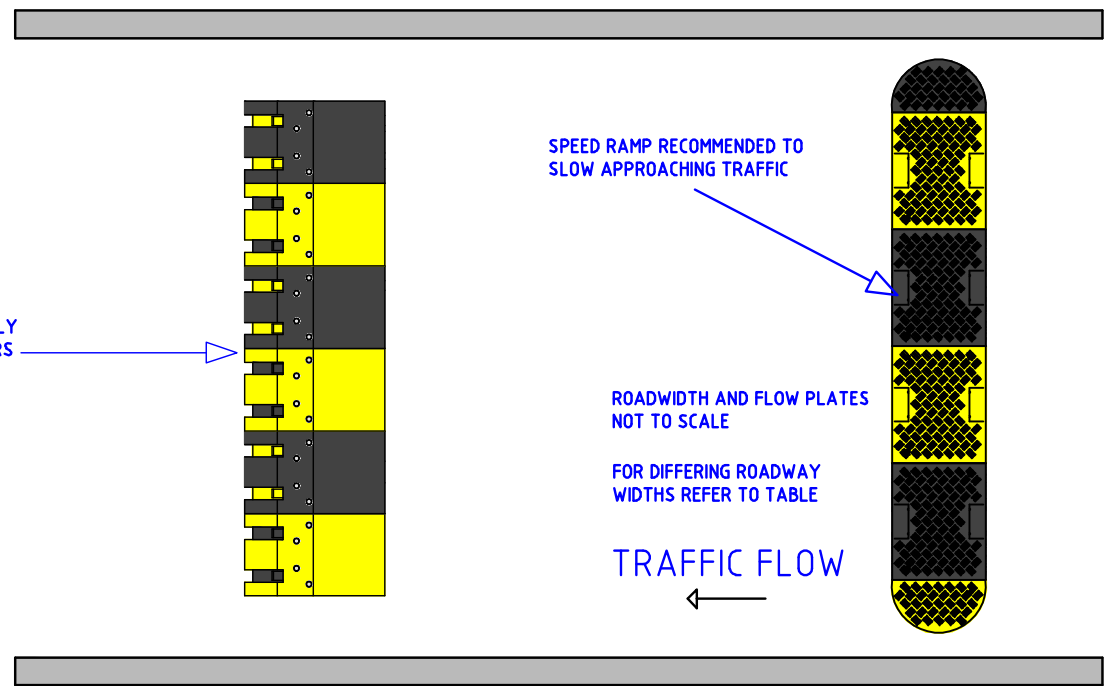


HGV FLOW PLATES ARE NORMALLY PROVIDED IN ALTERNATE COLOURS AS SHOWN.



SPEED RAMP RECOMMENDED TO SLOW APPROACHING TRAFFIC

ROADWIDTH AND FLOW PLATES NOT TO SCALE

FOR DIFFERING ROADWAY WIDTHS REFER TO TABLE

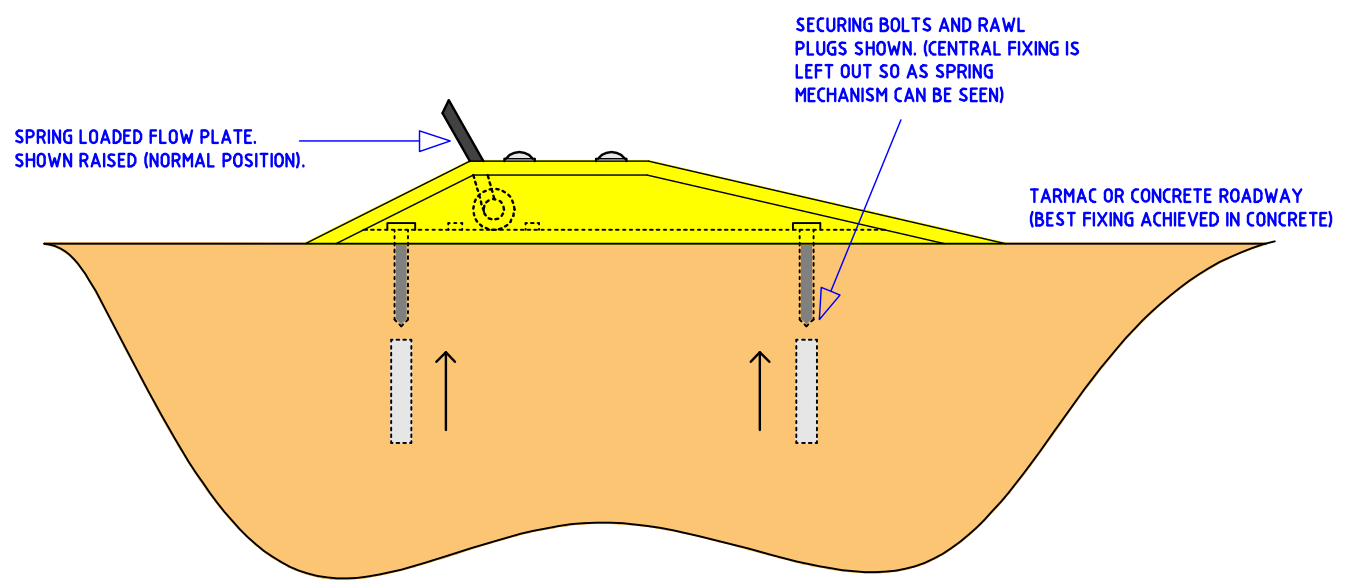
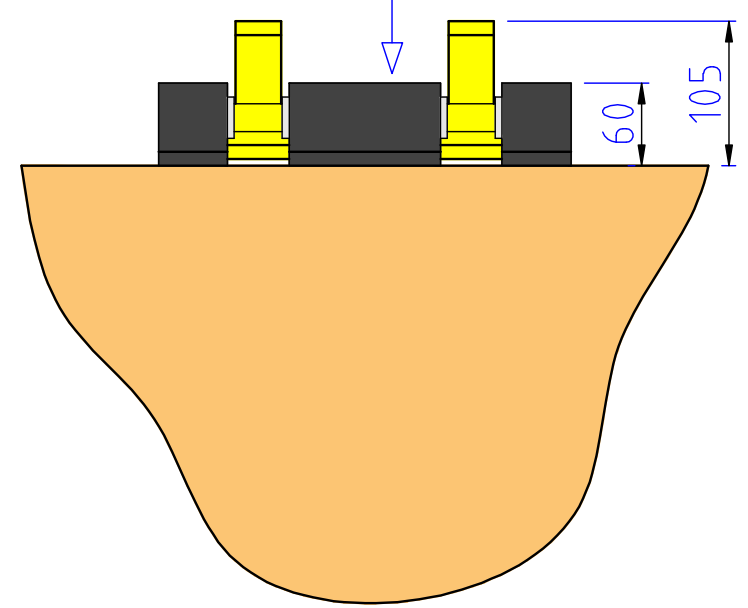
TRAFFIC FLOW

TRAFFIC FLOW CONTROL PLATES ARE DESIGNED TO ENCOURAGE ONE WAY TRAFFIC FLOW AND PREVENT UNAUTHORISED ENTRY/EXIT WITHIN ANY LOCATION.

MANUFACTURED FROM HEAVY STEEL PLATE, WITH NOISE REDUCTION BUFFERS TO ALLOW SMOOTH OPERATION.

AVAILABLE IN STANDARD YELLOW/BLACK POWDER COATING WITH YELLOW/BLACK POWDER COATED TEETH.

HGV FLOW PLATES ARE AVAILABLE IN BLACK/YELLOW POWDER COATING AS SHOWN.



SPRING LOADED FLOW PLATE. SHOWN RAISED (NORMAL POSITION).

SECURING BOLTS AND RAWL PLUGS SHOWN. (CENTRAL FIXING IS LEFT OUT SO AS SPRING MECHANISM CAN BE SEEN)

TARMAC OR CONCRETE ROADWAY (BEST FIXING ACHIEVED IN CONCRETE)

ROAD WIDTH METRIC (mm)	IMPERIAL (FEET)	NO. OF PLATES
2000	6.56'	5
2500	8.20'	7
3000	9.84'	8
3500	11.48'	10
4000	13.12'	12
4500	14.76'	13
5000	16.40'	15
5500	18.05'	17
6000	19.69'	18
